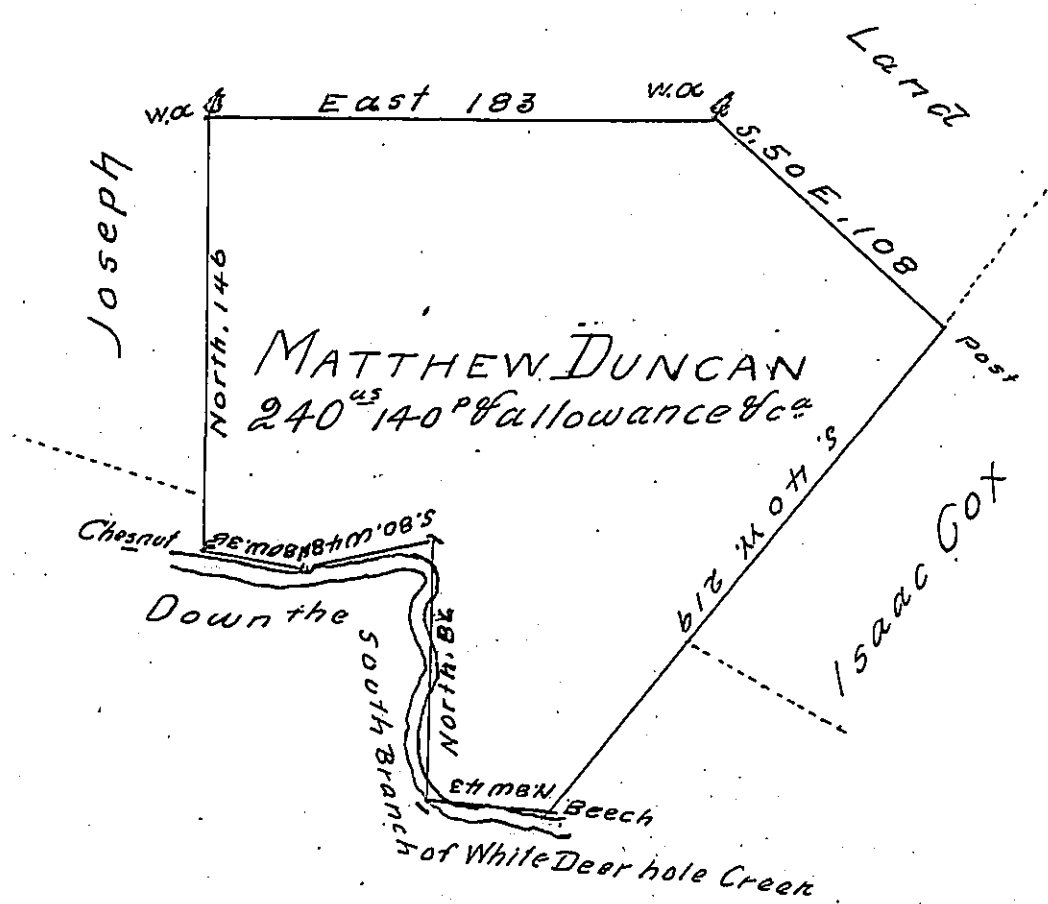


Shippen Esqr



A Draught of a Tract of Land situate on the North side of the South Branch of White Deer-Hole Creek in the County of Berks Called M^o McCormicks Tract. Surveyed the 29th day of May 1770 to Matthew Duncan. In pursuance of an Application No 504 dated the 3^d day of April 1769. Containing Two hundred and forty acres One hundred and forty perches and allowance of 6 p Cent &c

Now North^{ly} Coy- Cha^s Lukens D.S.
 To John Lukens Esqr
 Surveyor General.

IN TESTIMONY that the above is a copy of the original remaining on file in the Department of Internal Affairs of Pennsylvania, made conformably to an Act of Assembly approved the 16th day of February, 1833, I have hereunto set my Hand and caused the Seal of said Department to be affixed at Harrisburg, this thirty first day of October 1905

Isaac B. Brown
 Secretary of Internal Affairs.